

A Year in the Life of a New IHI Open School Chapter



Wednesday
November 29,
2017

Today's Agenda

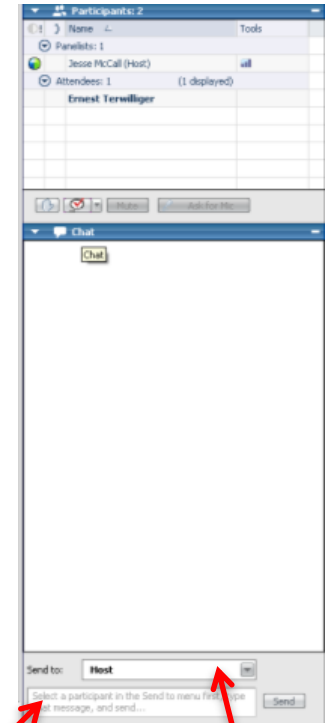
- Welcome and Introductions
- Tips for New Chapters
- Introducing the New Chapter Coaching Team
- Chapter Presentations
- Questions/Discussion
- IHI Open School Announcements



Type into the chat box:

Select “All Participants” as the recipient:

1. Name
2. Chapter Name (University/Organization)
3. How long have you been involved with your Chapter?
4. Are you a new Chapter?
5. What would you like to learn from today’s call?



Enter Text

Select Chat recipient



Introductions



Sarah Jasim, MPH, PhD
Chapter Network Coach



Meghan Cowden, RN
Chapter Network Coach



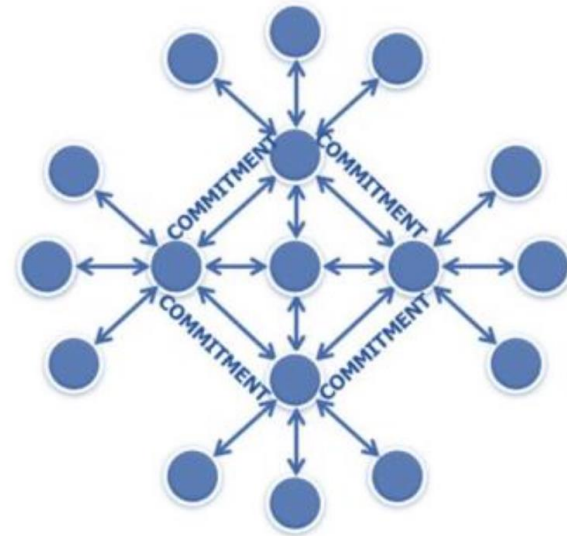
Gina Deitz
Community Manager,
IHI Open School



Tips for New Chapters

Tips for New IHI Open School Chapters

- Establish a leadership structure (there a number of examples in the Chapter Leader Toolkit)
- Identify faculty at your university to support your Chapter



Originally adapted from the works of Marshall Ganz at Harvard University and modified by the IHI Open School.

Tips for New IHI Open School Chapters

- Determine your Chapter's identity
 - What is your mission?
 - What is your vision?
 - What will the Chapter look like 1 year from now? 3 years? 5 years?
- Create 1-3 aim statements for your first year as a Chapter, to help guide your work.



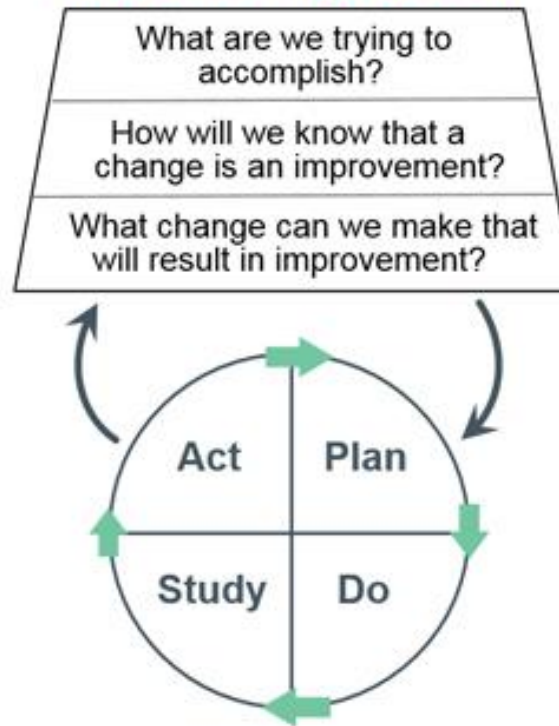
Developing Chapter AIMS

- How good? By when? For whom?
 - Examples
 - *Our IHI Open School Chapter will have 10 members attend our chapter meeting by January, 2018.*
 - *Our leadership team will attend two campus-wide recruitment events by February 2018.*



Establish Measures and Implement

Model for Improvement



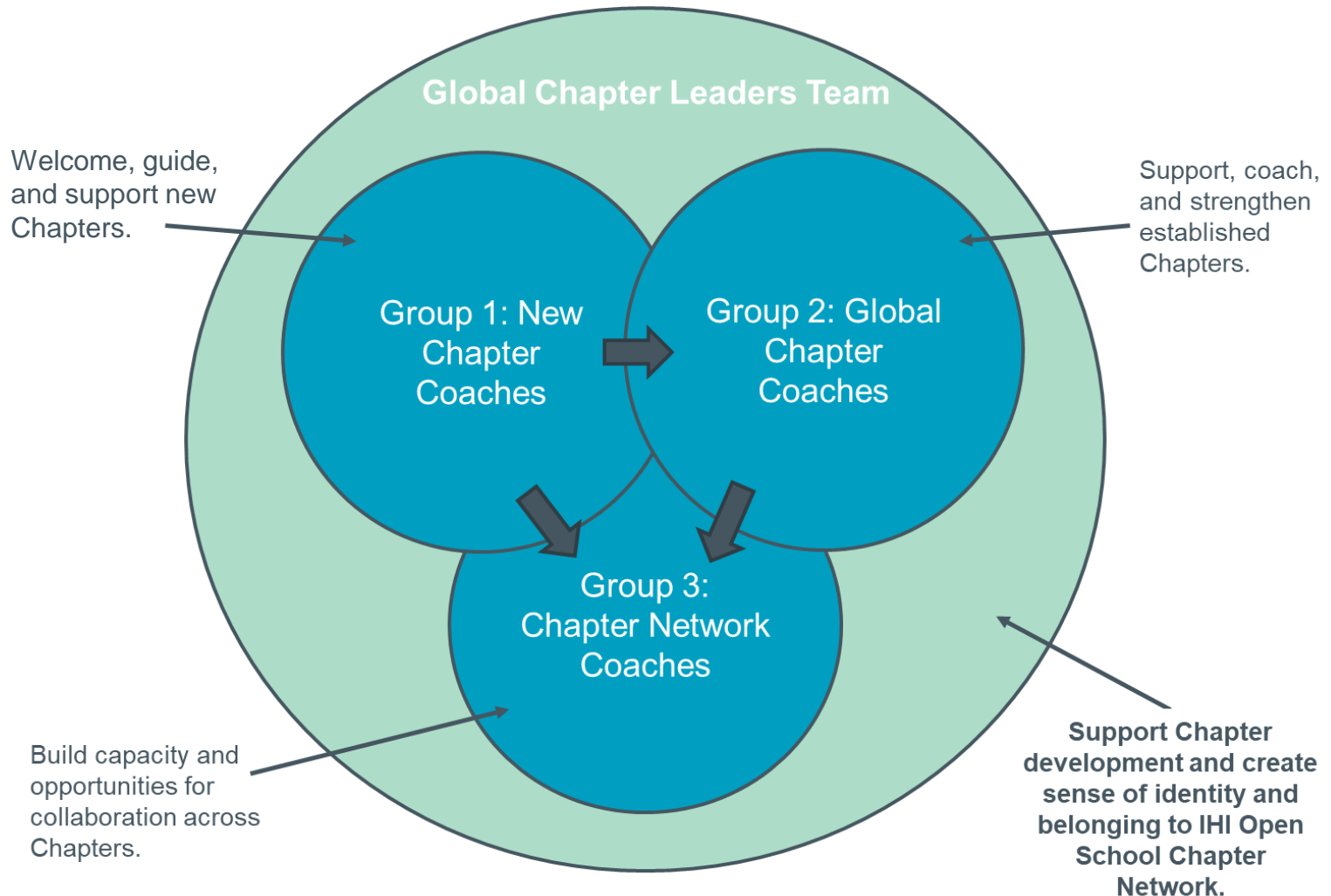
Utilize Your Resources

- Chapter Leader Toolkit
- IHI Open School Chapter Website
- Connect with faculty and professionals in your community
- Take *OS 101: Introduction to the IHI Open School*
- Connected with the New Chapter Coaching Team
- Each other!



Introducing the New Chapter Coaching Team

Global Chapter Leader Team



New Chapter Coaching Team

Shared Purpose: Using their expertise and experience as current or former Chapter Leaders, New Chapter Coaches enable the success of IHI Open School Chapters through providing initial support and resources to enable leaders to build sustainable Chapters around the world.



New Chapter Coaching Team

- Virtual face-to-face conversations to coach and support Chapter
- We coach new Chapters, guiding and supporting them through the first year of establishment or re-establishment
- Provide insight into how Chapters can leverage IHI Open School resources and draw on experiences as current and former Chapter Leaders
- Aim to enable new or re-established Chapters in creating sustainable and productive Chapter structures and becoming actively involved in their communities



How to Connect with Us

New Chapter Coach Team

Abigail Bieber

Green Bay, WI

Nursing Student

Current CL for Bellin College

Claire Hornsby

West Lafayette, Indiana

Nursing Student

Current CL at Purdue University

Njimafo Armand, MD

Yaoundé Center, Cameroon

Junior Doctor

Former CL for Université d'Antanarivo

Hetina Pandya, MSHM

Providence, RI

Healthcare Professional

Former CL at UT Dallas

Sara Moraes

Minas Gerais, Brazil

Healthcare Professional

Current CL Hospital das Clínicas da Federal University of Minas Gerais

Email us at

newchaptercoach.ihios@gmail.com



Imperial College Chapter

Getting off the ground

- Context was important - Imperial College London/ Imperial College Healthcare Trust
- Initial challenges
- Received support from IHI Open School regional leader (now Global Chapter Leaders)



After 1 year...

- Formed a working group
- Involved key research groups and faculties
- Hosted our first event!



Purdue Chapter

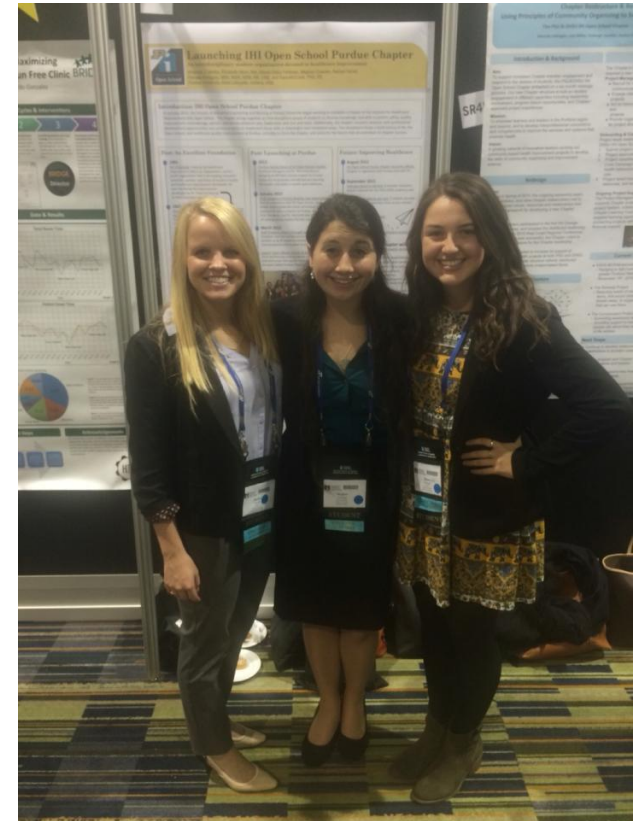
Getting Started

- Forming a launch team
- Establishing a Chapter
- Leadership



Growing Our Chapter

- Gaining new members
 - Committees
- Monthly chapter meetings
- IHI National Forum 2015



What we learned...

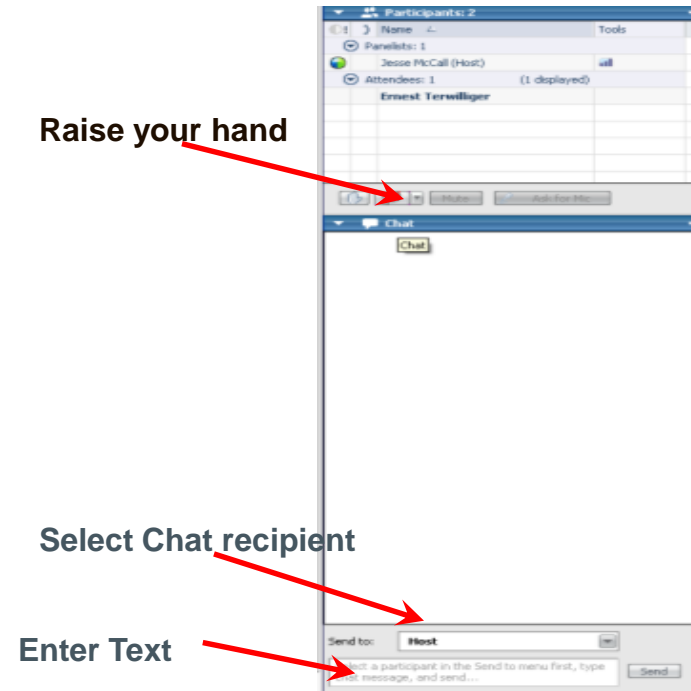
- Failing forward is real
- Gear your Chapter to meet the needs within your community/university
- Pick a focus and tackle big ideas one at a time
- Slow, meaningful Chapter growth is a great place to start
- Use your resources



Q&A

Questions and open discussion

- What is the greatest challenge your Chapter has faced/is facing during its first year?
- What have been the best resources for your Chapter during your first year?
- Tell us about a time your Chapter failed forward and what you learned from it!



When chatting:

- Raise your hand to let us know you have a question or comment
- Please use chat to “**All Participants**” for questions



Wrap Up and Announcements

Update the IHI Open School

Changes in your leadership team? Let us know!

Update your Chapter's contact information from the Chapter homepage on the IHI Open School website or email us at openschool@ihi.org.



Attending the National Forum?

- Join us next week **Thursday, December 7 from 12:00 – 1:00 PM ET!**
- Email openschool@ihi.org for WebEx connection information (or just add your email address into the chat box)



Global Chapter Leaders are just an email away

- New Chapter Coaches:
newchaptercoach.ihios@gmail.com
- Global Chapter Coaches:
globalchaptercoach.ihios@gmail.com
- Chapter Network Coaches:
chapternetworkcoach.ihios@gmail.com



Thank you!